

## CHANGE ORDER REQUEST

To:

No. COR 158R

Date

Project # 180046

Project Name Tolleson Union High School No 7

Project Manager Connor Lewis

### Scope Description

### Additional Days

Offsite concrete revisions as required by the City of Avondale's Planning & Zoning Department in Right of Way, adjacent to the school's property, to allow for pedestrian/vehicular access and egress from the school site along 119th Avenue, Encanto Blvd & Avondale Blvd.

Job Code	Cost Code	Description	Amount
180046-10	03100	LR Cowan - Offsite Concrete Improvements	18,383.00
180046-10	70100	Liability Insurance	183.83
180046-10	70400	Builders Risk Insurance	64.98
180046-10	70500	Payment & Performance Bonds	204.95
180046-10	79999	Contractor Fee	1,024.72
180046-10	70600	Gross Receipts Tax	1,136.08

Allowance Usage Authorization Total

\$ 20,997.56

### NOTE:

Unless clarified above, CHASSE Building Team reserves the right to evaluate and/or revise the scheduled completion date and review general conditions for the project based on the cumulative impact of this and other changes in the future.

CONTRACTOR

OWNER

ARCHITECT

CHASSE Building Team

Submitted By:

Approved By:

Approved By:

Connor Lewis

cc:

Date:

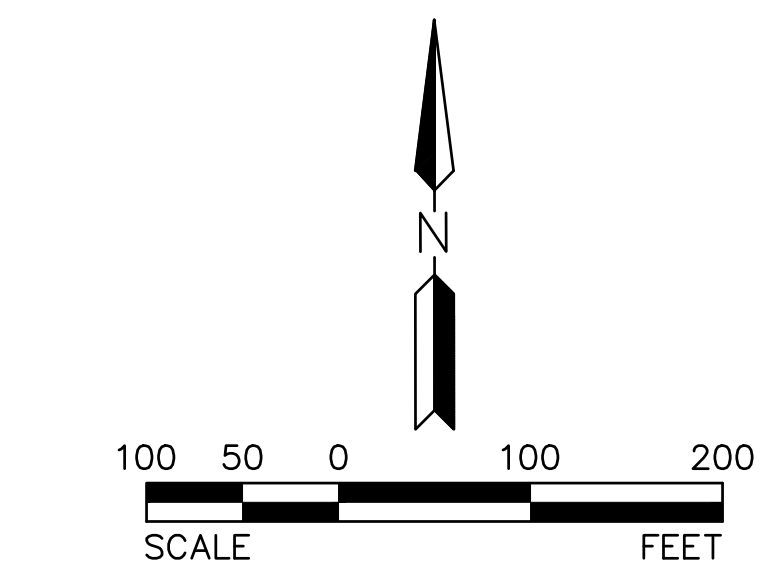
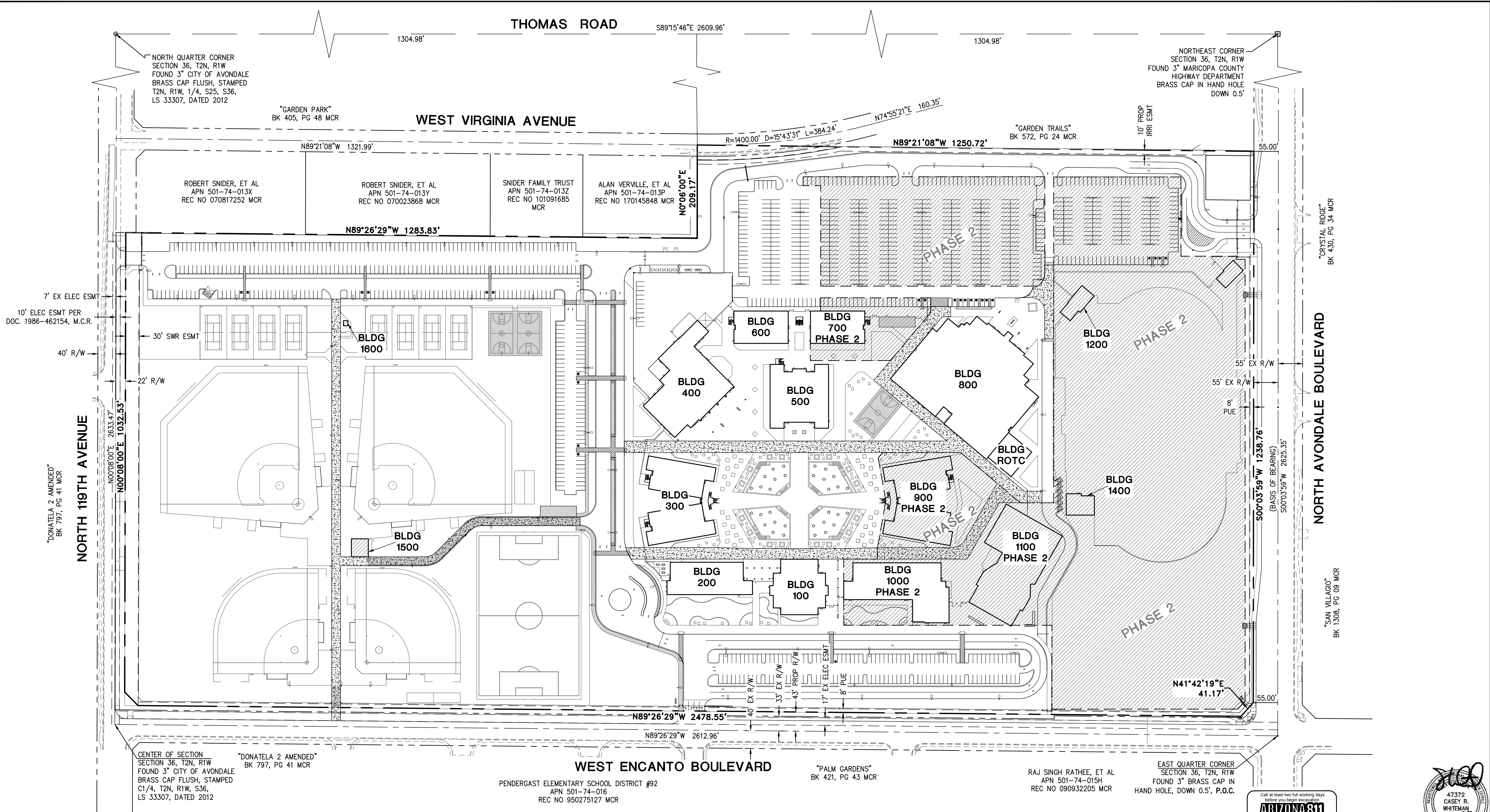
Date:







© Copyright, YYYY, HILGARTWILSON, LLC - This plan document set is the sole property of HILGARTWILSON, LLC. No alterations to these plans, other than adding "as-built" information, are allowed by anyone other than authorized HILGARTWILSON, LLC employees.



FOR REFERENCE ONLY

Call at least two full working days before you begin excavation


**ARIZONA 811**

Arizona Blue State, Inc.  
Dial 8-1-1 or 1-800-STAKE-IT (1-800-782-5348)  
In Maricopa County, (602) 253-1100

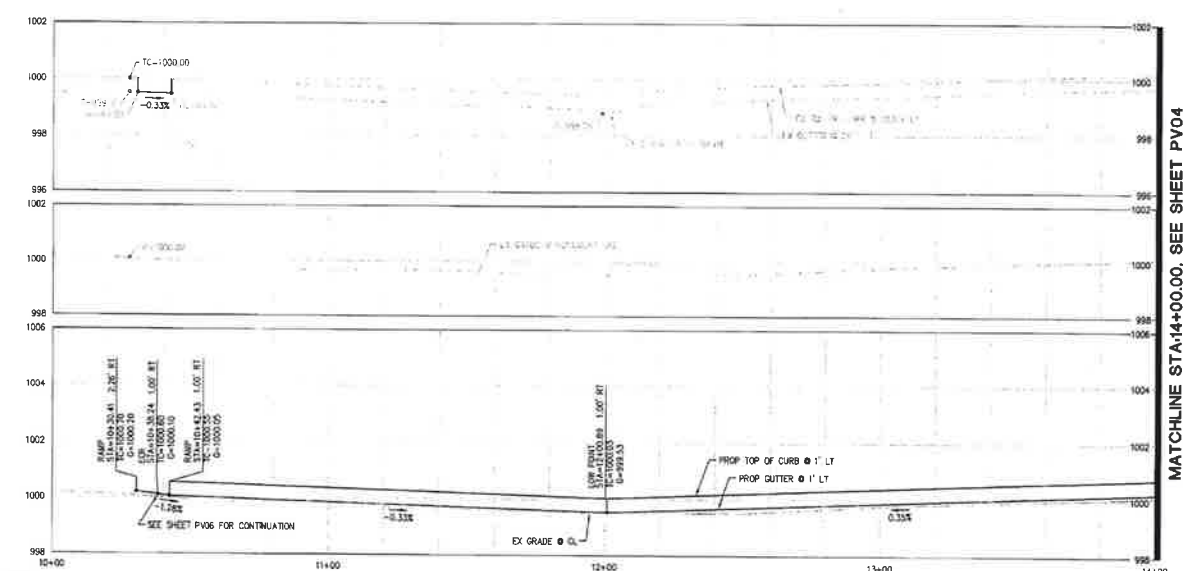
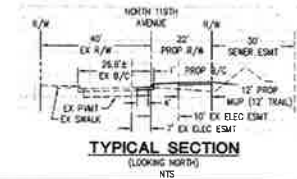
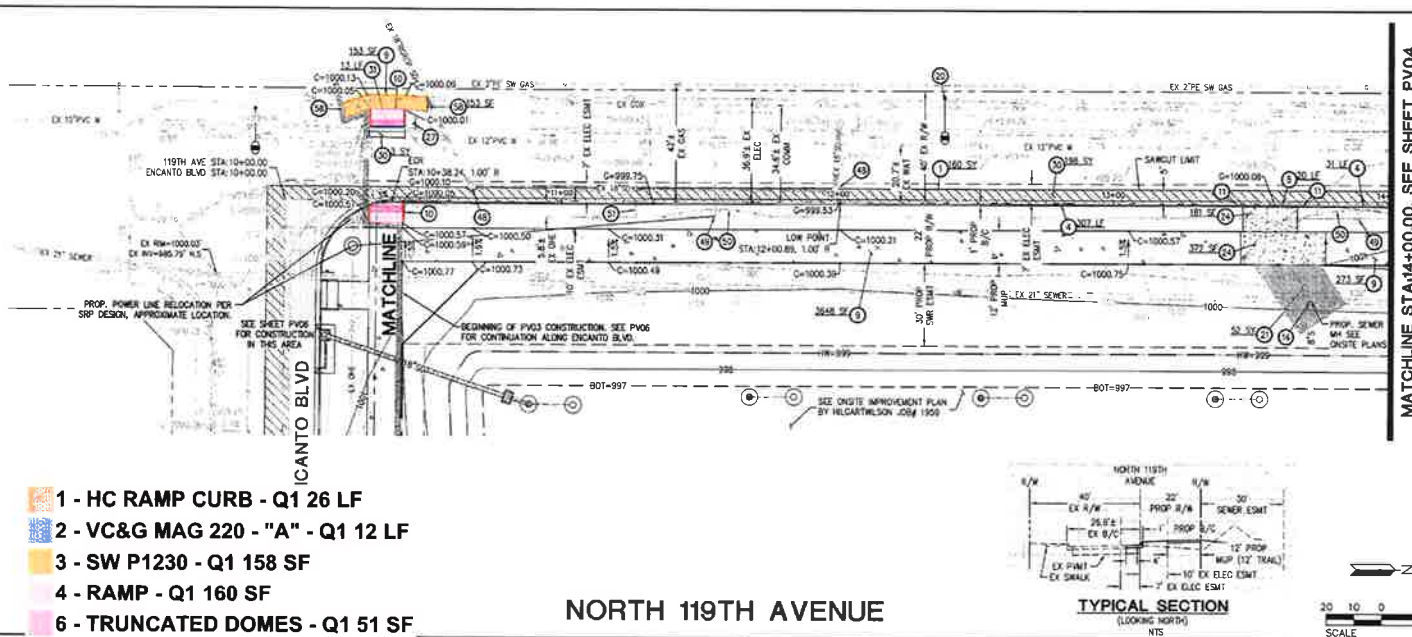
**47372**  
CASEY R.  
WHITEMAN  
Surveyor  
ARIZONA U.S.A.  
Expires 03/31/2020

**TOLLESON HIGH SCHOOL #7**  
11620 WEST ENCANTO BLVD  
AVONDALE, ARIZONA

**OVERALL CIVIL SITE PLAN**

PROJ. NO.	1959	 <b>HILGARTWILSON</b>			
DATE:	AUGUST 2018				
SCALE:	1" = 100'				
DESIGNED:	JW	DRAWN:	CM	APPROVED:	CW
REV.					
					DWG. NO.
					<b>C1.0</b>
					SHT. X OF X

© Copyright, 1999, Hilgartwilson, LLC. No other reproduction, in any form, is permitted without the written consent of Hilgartwilson, LLC. All rights reserved. No part of this document may be reproduced, stored in a retrieval system, or transmitted, in any form, or by any means, electronic, mechanical, photocopying, recording, or by any information storage and retrieval system, without the prior written permission of Hilgartwilson, LLC.



**PAVING CONSTRUCTION NOTES**

1	INSTALL 3.5" AC ON 10" ABC OR MATCH IN KIND, WHICHEVER IS GREATER. SEE DETAIL 1, SHEET P102 AND COA STD DTL A102 FOR ADDITIONAL INFORMATION.	160 SF
2	CONSTRUCT 6" VERTICAL CURB AND GUTTER PER MAG STD DTL 220-1, TYPE "A".	336 LF
3	CONSTRUCT 6" MOUNTABLE CURB AND GUTTER PER MAG STD DTL 220-2, TYPE "E".	20 LF
4	CONSTRUCT 4" THICK CONCRETE MULTI-USE PATH PER MAG STD DTL 230 AND MAG SPECS 340, 725 & 728, WIDTH AS SHOWN.	4074 SF
10	CONSTRUCT SIDEWALK RAMP PER MAG STD DTL 236-1 CONSTRUCT DETECTABLE WARNING SURFACE PER COA STD DTL A1234.	2 EA
11	CONSTRUCT 5" CURB TRANSITION PER MAG STD DTL 220-2, TYPE "E" TO "A".	3 EA
16	ADJUST SEWER MANHOLE COVER & FRAME COA STD DTL 1216.	1 EA
20	PROPOSED STREET LIGHT. SEE STREET LIGHT PLAN BY NIGHT ENGINEERING.	1 EA
21	TRAFFIC RATED COMPACTED DG FOR SEWER LINE ACCESS. SEE LANDSCAPE PLANS FOR MATERIAL.	52 SF
24	CONSTRUCT 6" THICK CONCRETE PER MAG SPEC 324, 340 AND 725, CLASS AA, AND SUBGRADE PREP PER MAG SPEC 301. SEE SOILS REPORT FOR ADDITIONAL INFORMATION.	553 SF
27	INSTALL STREET SIGN BASE PER COA STD DTL A1030.	1 EA
28	SAWCUT & REMOVE EXISTING AC PAVEMENT, 2" MIN.	201 SF
29	REMOVE EXISTING CURB.	13 LF
30	PROTECT EXISTING MANHOLE IN PLACE DURING CONSTRUCTION. ADJUST FRAME AND COVER PER MAG STD DTL 422.	2 EA
40	PROTECT EXISTING POWER POLE IN PLACE DURING CONSTRUCTION.	2 EA
50	PROTECT EXISTING GUARD RAIL IN PLACE DURING CONSTRUCTION.	2 EA
51	PROTECT EXISTING SIGN IN PLACE DURING CONSTRUCTION.	1 EA
52	REMOVE EXISTING SIDEWALK TO NEAREST JOINT.	153 SF

**KEYMAP**  
NTS

**TOLLESON HIGH SCHOOL #7**  
NWC AVONDALE BLVD & ENCANTO BLVD  
AVONDALE, ARIZONA

**OFFSITE PAVING PLAN**

PROJ. NO. 1959  
DATE: JAN 2019  
SCALE: 1"=20'  
DESIGNED: JW DRAWN: CM APPROVED: CW  
REV. \_\_\_\_\_  
DWG. NO. \_\_\_\_\_  
**PV03**  
SHT. 3 OF 16



MATCHLINE STA19+90, SEE SHEET PV07

MATCHLINE STA19+50, SEE SHEET PV07

MATCHLINE STA25+10, SEE SHEET PV08

MATCHLINE STA24+50, SEE SHEET PV09

## BACK OF CURB - CURVE TABLE

CURVE #	RADIUS	DELTA	LEN
C1	30.00'	90°33'31"	47.1'
C2	20.00'	89°29'29"	31.1'

1 - HC RAMP CURB - Q1 13 LF

2 - VC&amp;G MAG 220 - "A" - Q1 32 LF

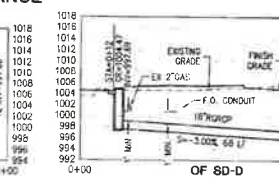
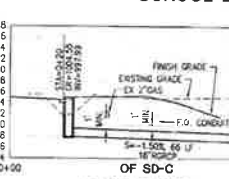
3 - SW P1230 - Q1 312 SF

4 - RAMP - Q1 62 SF

6 - TRUNCATED DOMES - Q1 42 SF

7 - RAMP COA 1235-4 - Q1 96 SF

## SCHOOL ENTRANCE

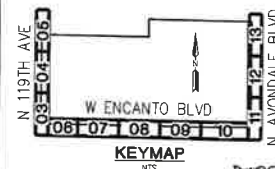
TYPICAL SECTION  
(LOOKING WEST - STA10+00 - STA22+46.23)

## WEST ENCANTO BOULEVARD

TYPICAL SECTION  
(LOOKING WEST - STA23+48.23 - STA36+00)

## PAVING CONSTRUCTION NOTES

- INSTALL 3.5" AC ON 10" AGG ON MATCH IN KING. WHOEVER IS ON SITE, SEE DETAIL 1, SHEET PV02 AND COA STD DTL A1700 FOR ADDITIONAL INFORMATION. 1228 SF
- CONSTRUCT 6" VERTICAL CURB AND OUTER PER MAG STD DTL 220-1, TYPE 'A'. 426 LF
- CONSTRUCT 4" THICK CONCRETE MULTI-USE PATH PER MAG STD DTL 230 AND MAG SPECS 340, 725 & 726, WIDTH AS SHOWN. 5435 SF
- CONSTRUCT SIDEWALK RAMP PER MAG STD DTL 225-1, CONSTRUCT DETECTABLE WARNING SURFACE PER COA STD DTL A1234. 3 EA
- CONSTRUCT DRIVEWAY PER COA STD DTL A1251-2, MODIFIED AS SHOWN. 1 EA
- PROPOSED STREET LIGHT, SEE STREET LIGHT PLAN BY WRIGHT ENGINEERING. 1 EA
- CONSTRUCT 8" THICK CONCRETE PER COA STD DTL A1258, DECELERATION LANE. 234 SF
- INSTALL STREET SIGN BASE PER COA STD DTL A1030. 8 EA
- SAUCUT & REMOVE EXISTING AC PAVEMENT, 2" MIN. 587 SF
- REMOVE EXISTING CURB. 32 LF
- RELOCATE EXISTING SIGN, SEE SIGNING AND STRIPING PLAN. 2 EA
- EXISTING HEADWALL REMOVAL PER SRP DESIGN. 1 EA
- EXISTING IRRIGATION PIPE REMOVAL PER SRP DESIGN. 1 EA
- EXISTING UTILITY, CONTRACTOR TO COORDINATE WITH UTILITY COMPANY PRIOR TO REMOVAL / RELOCATION OF ANY UTILITY LINES AND STRUCTURES. VERIFY LOCATIONS AND DEPTH PRIOR TO CONSTRUCTION. PROJECT IN PLACE AS NECESSARY TO MAINTAIN USE UNTIL COORDINATION HAS TAKEN PLACE. 1 EA
- CAUTION!! EXISTING GAS LINE, CONTRACTOR TO COORDINATE WITH UNDERGROUND / E.P. PASS FOR EXACT LOCATION, NOTIFY ENGINEER OF ANY ISSUES PRIOR TO TRENCHING IN THIS AREA. 6 LF
- REMOVE EXISTING BARRICADE. 1 EA
- PROTECT EXISTING MANHOLE IN PLACE DURING CONSTRUCTION, ADJUST FRAME AND COVER PER MAG STD DTL 422. 160 SF
- REMOVE EXISTING SIDEWALK TO NEAREST JOINT. 160 SF
- UNDERGROUNDING AND REMOVAL OF EXISTING OVERHEAD ELECTRIC POWER POLES PER SRP DESIGN. 1 EA
- EXISTING GUY WIRES, PROTECTION AND REMOVAL PER SRP DESIGN. 1 EA
- UTILITY CROSSING, VERIFY LOCATION PRIOR TO TRENCHING. 1 EA
- CONSTRUCT SIDEWALK RAMP PER COA STD DTL 1235-4, CONSTRUCT DETECTABLE WARNING SURFACE PER COA STD DTL A1234. 524 LF
- INSTALL FIBER OPTIC CONDUIT PER COA STD DTL A1720-2 (ENCANTO BLVD), INSTALL WITHIN 6" PUE. 1 EA
- INSTALL NO. 7 PULL BOX PER COA STD DTL A1717 (700' MAX SPACING), INSTALL WITHIN RIGHT-OF-WAY. 1 EA
- INSTALL 45' FIBER OPTIC CONDUIT BEND PER DETAIL 3, SHEET PV02. 4 EA

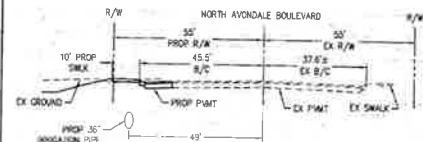
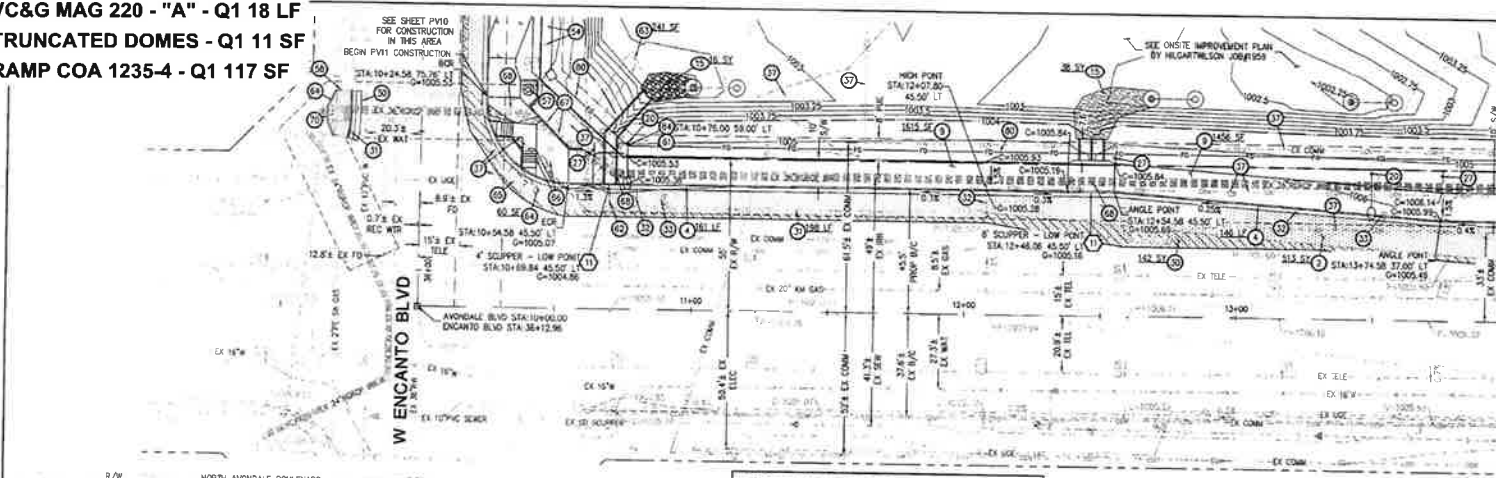
TOLLESON HIGH SCHOOL #7  
NWC AVONDALE BLVD & ENCANTO BLVD  
AVONDALE, ARIZONA

## OFFSITE PAVING PLAN

PROJ. NO.	1959
DATE	JAN 2019
SCALE	1"=20'
DESIGNED	JW
DRAWN	CM
APPROVED	OW
DWG. NO.	PV08
SHT.	8 OF 16

BY THE ENGINEER, THESE PLANS ARE NOT TO BE USED FOR ANY OTHER PROJECT.

- 1 - HC RAMP CURB - Q1 17 LF
- 2 - VC&G MAG 220 - "A" - Q1 18 LF
- 6 - TRUNCATED DOMES - Q1 11 SF
- 7 - RAMP COA 1235-4 - Q1 117 SF



**STORM PLAIN CONSTRUCTION NOTES**

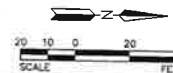
11. INSTALL CONCRETE SCUMPER AND SPILLWAY PER MAG STD DTL 206-1, 206-2 & 206-3 AND MANHOLE PER MAG STD DTL 142. WIDTH AS NOTED.
15. INSTALL LOOSE R/W RAMP, 0.50'-6", 12" THICK, WITH NON-WOVEN GEOTEXTILE UNDERLAY PER MAG SPEC SECT 220.5.

**BACK OF CURB - CURVE TABLE**

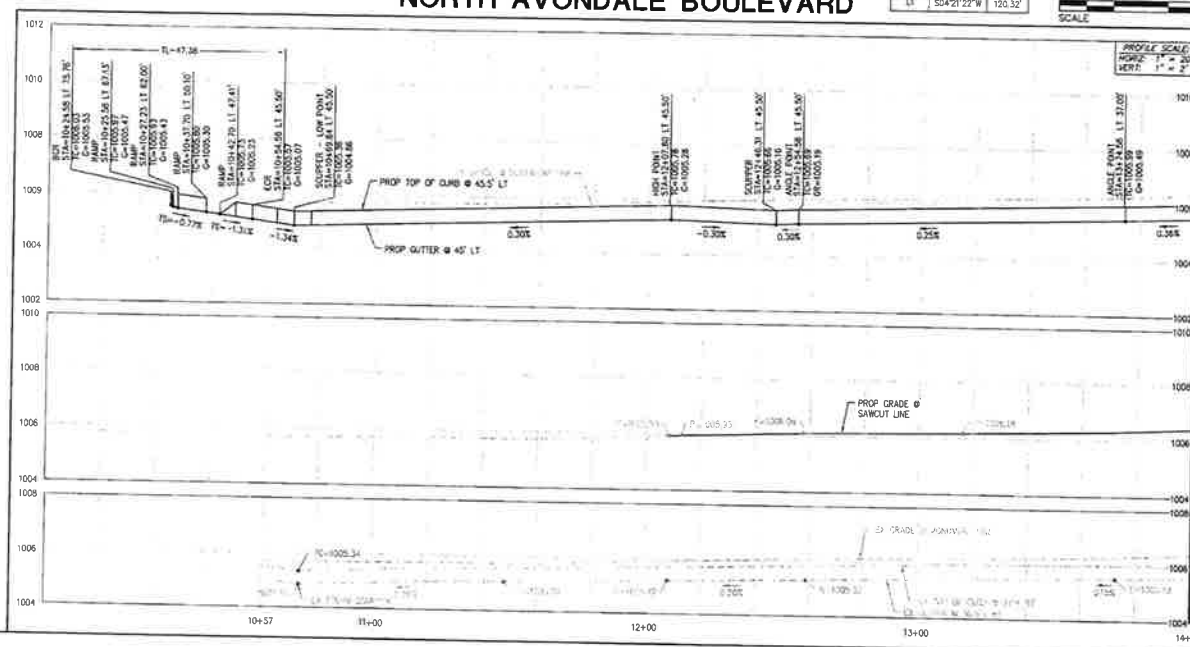
CURVE #	RADIUS	DELTA	LENGTH
C1	30.00'	90°29'32"	47.38'

**LINE TABLE**

LINE #	DIRECTION	LENGTH
L1	S44°21'22"W	120.32'



## NORTH AVONDALE BOULEVARD



- PAVING CONSTRUCTION NOTES**
1. INSTALL 5" AC ON 12" ABC OR WATCH IN KIND, WHICHEVER IS GREATER. SEE DETAIL 2, SHEET PVI02 AND COA STD DTL A1506 FOR ADDITIONAL INFORMATION.
  2. CONSTRUCT 6" VERTICAL CURB AND OUTER PER MAG STD DTL 220-1, TYPE A1.
  3. CONSTRUCT 4" THICK CONCRETE MULTI-USE PATH PER MAG STD DTL 230 AND MAG SPEC 340.725 & 725. WIDTH AS SHOWN.
  4. PROPOSED STREET LIGHT. SEE STREET LIGHT PLAN BY WEIGHT ENGINEERING.
  5. CONSTRUCT B-DIRECTIONAL RAMPS PER COA STD DTL A1235-1.
  6. INSTALL STREET SIGN BASE PER COA STD DTL A1030.
  7. SAWCUT & REMOVE EXISTING AC PAVEMENT, 2" MIN.
  8. REMOVE EXISTING CURBS.
  9. RELOCATE EXISTING SIGN. SEE SIGNING AND STRIPING PLAN.
  10. EXISTING GAS MANHOLE. GAS LINE OFFSET FROM THIS LOCATION. CONTRACTOR TO COORDINATE WITH UTILITY COMPANY PRIOR TO REMOVAL / RELOCATION OF ANY UTILITY LINES AND STRUCTURES. VERIFY LOCATIONS AND DEPTH PRIOR TO CONSTRUCTION. PROTECT IN PLACE AS NECESSARY TO MAINTAIN USE UNTIL COORDINATION HAS TAKEN PLACE.
  11. PROTECT EXISTING UTILITY DURING CONSTRUCTION.
  12. PROPOSED TRAFFIC SIGNAL. SEE TRAFFIC SIGNAL PLAN BY WEIGHT ENGINEERING.
  13. REMOVE EXISTING SIDEWALK TO NEAREST JOINT.
  14. UTILITY CROSSING. VERIFY LOCATION PRIOR TO TRENCHING.
  15. REMOVE EXISTING CONCRETE SCUMPER.
  16. REMOVE EXISTING CONCRETE SPILLWAY.
  17. REMOVE EXISTING SIDEWALK.
  18. REMOVE EXISTING SIDEWALK RAMP.
  19. RELOCATE EXISTING TRAFFIC SIGNAL AND ASSOCIATED EQUIPMENT PER TRAFFIC SIGNAL PLANS BY WEIGHT ENGINEERING.
  20. RELOCATE EXISTING UTILITY STRUCTURE. CONTRACTOR TO COORDINATE WITH UTILITY COMPANY PRIOR TO CONSTRUCTION.
  21. CAUTION! 36" SBB IRIGATION PIPE. CONTRACTOR TO VERIFY LOCATION AND DEPTH PRIOR TO CONSTRUCTION WITHIN THIS AREA.
  22. CONSTRUCT SIDEWALK RAMP PER MAG STD DTL 238-3. CONSTRUCT DETECTABLE WARNING SURFACE PER COA STD DTL A1234, MODIFIED FOR TRAFFIC SIGNAL EQUIPMENT.
  23. INSTALL FIBER OPTIC CONDUIT PER COA STD DTL A1720-1 (AVONDALE BLVD). INSTALL WITHIN 8' PUE.
  24. INSTALL 45" FIBER OPTIC CONDUIT BEND PER DETAIL 3, SHEET PVI02.



**TOLLESON HIGH SCHOOL #7**  
NWC AVONDALE BLVD & ENCANTO BLVD  
AVONDALE, ARIZONA

**OFFSITE PAVING PLAN**

PROJ. NO. 1959  
DATE: JAN 2019  
SCALE: 1"=20'  
DESIGNED: JW DRAWN: CM APPROVED: CW  
REV. \_\_\_\_\_  
DWG. NO. **PV11**  
SHT. 11 OF 18

**6 - TRUNCATED DOMES - Q1 26 SF**

